

# Solar Eclipse DIY Model

## You will need:

- Sun, moon, and connector strips
- Glue
- Scissors
- Brass fastener
- Crayons

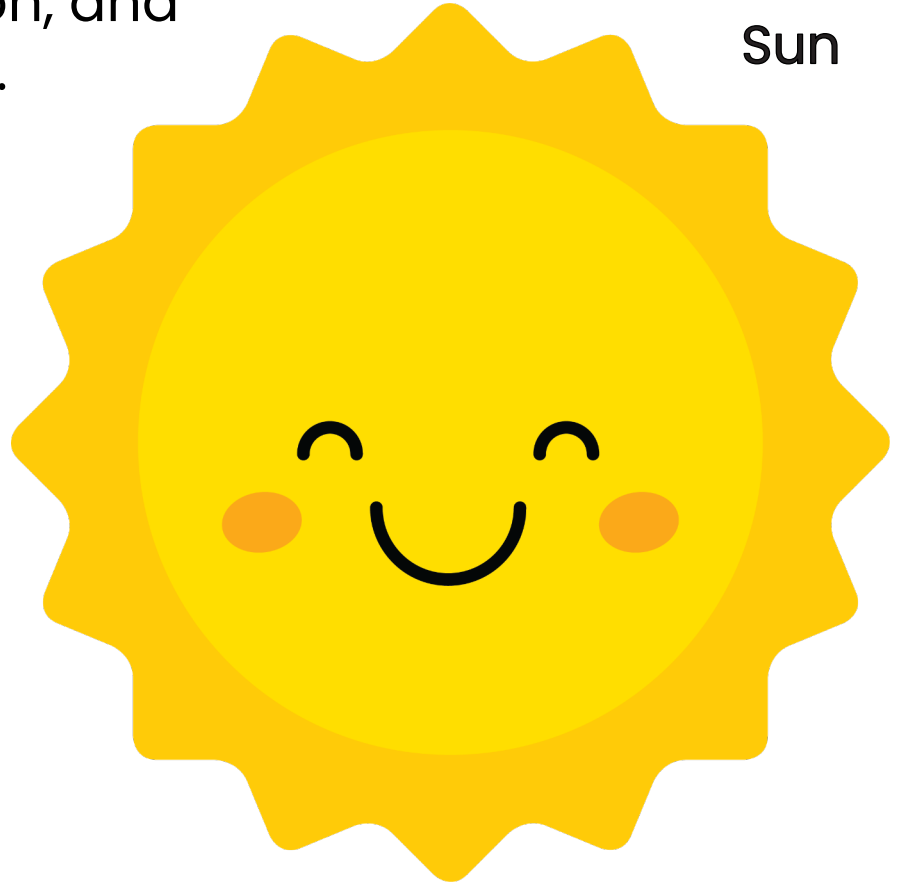
## Instructions:

1. Color the sun and moon pictures
2. Cut out the sun, moon, and two connector strips
3. Glue the moon to the top of one of the connector strips
4. Glue the sun to the other connector strip
5. Use a pencil or brass fastener to punch a hole through the marked areas at the bottom of each connector strip. The moon should be placed on top of the sun.
6. Model how the moon blocks the sun's light during a solar eclipse by moving the moon over the sun.

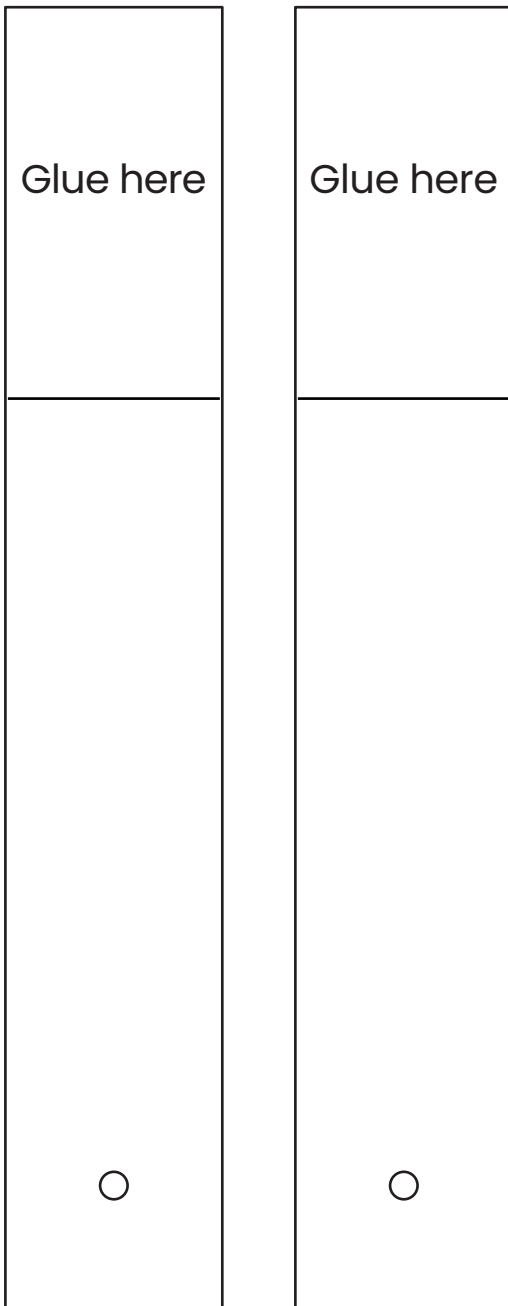
# Solar Eclipse DIY Model

Cut out the sun, moon, and two connector strips.

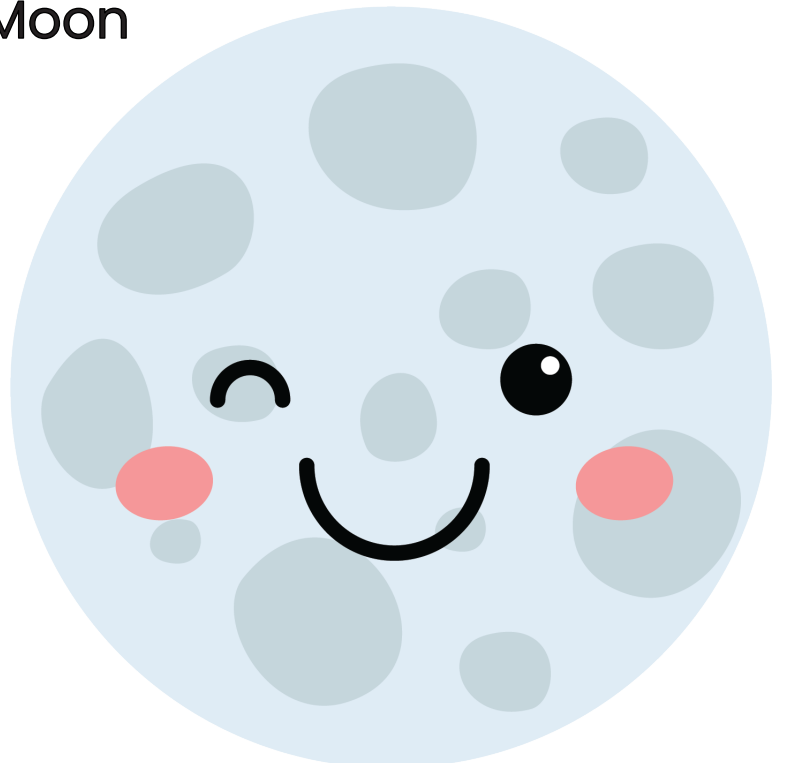
Sun



## Connector Strips



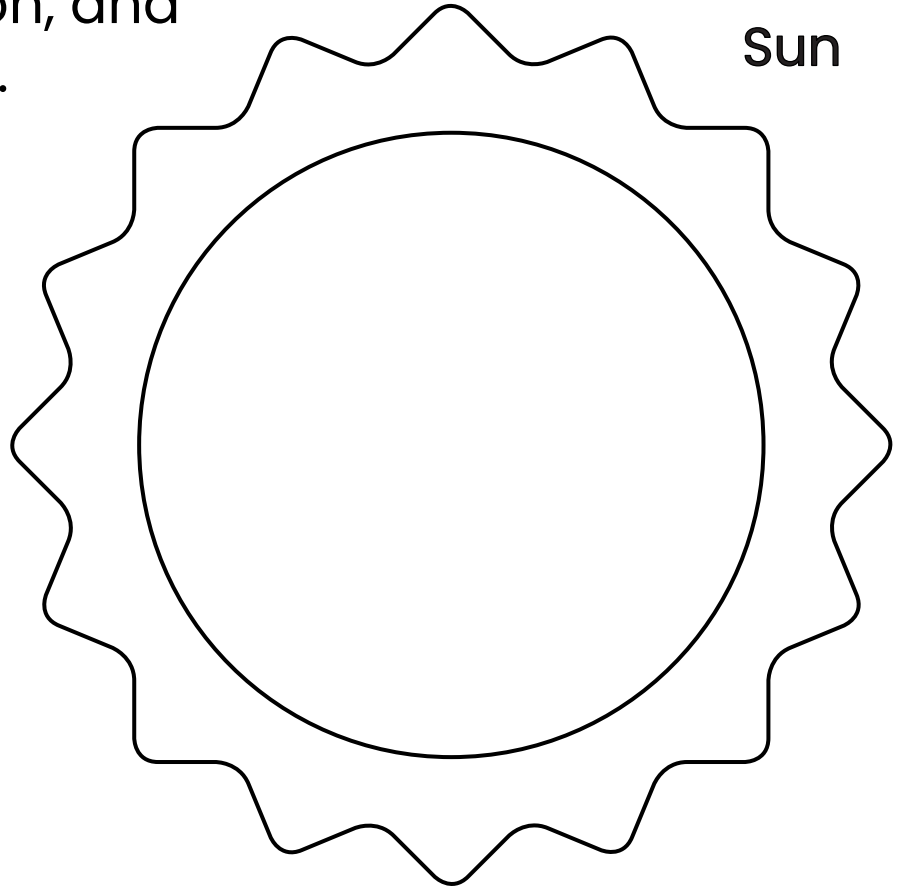
Moon



# Solar Eclipse DIY Model

Cut out the sun, moon, and two connector strips.

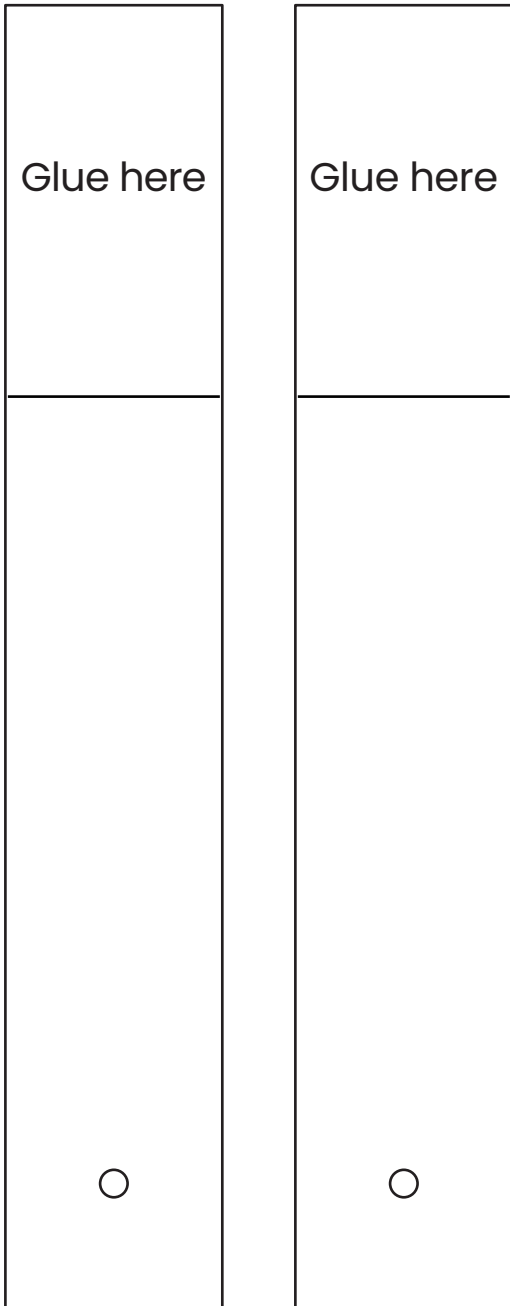
Sun



## Connector Strips

Glue here

Glue here



Moon

